



GRID
PROTECTION
ALLIANCE

PQDashboard
User's Group

open **MIC** *open* **XDA**
System Center **miMD**
open **SEE** **PQBrowser**
TrenDAP POWER QUALITY **Digest**



Debuting PQ Browser

SE PQ Browser

- SE = System Event
- Browser expanding beyond just Event browsing

The image displays two overlapping software interfaces. The background interface is the 'System Event Browser', which features a search bar, filters for Date, Time Window, Event Types, Asset Types, Voltage Class, and Meter Types, and a table of event records. The foreground interface is the 'PQ Browser', which includes a Date/Time Filter, various filters for PQ characteristics (like Sag, Interruption, Transients), a waveform analysis graph showing voltage fluctuations over time, and a table of disturbance events.

Time	Asset	Asset Tp	kV	Ext Cl	Evtr Op
08/04/2020 00:36:41.9660000	L-FL1	Line	0.208	Sag	
08/03/2020 23:13:30.3950000	Deb-Mar	Line	115	Sag	
08/03/2020 23:13:30.3900000	Deb	Line	115	Fault	
01/07/2014 01:47:43.9660000	L-FL1	Line	0.208	Other	
01/07/2014 00:11:45.9560000	L-FL1	Line	0.208	Other	
01/04/2014 00:34:43.6940000	L-FL1	Line	0.208	Other	

Time	Event Type	Meter
09/01/2023 01:40:35.4889120	Other	Gotham City 181-Cap 5 Relay
09/01/2023 01:40:35.4903440	Other	Gotham City 181-Cap 1-4 Relays
09/01/2023 09:13:05.6140630	Other	Gotham City 181-Cap 5 Relay
09/01/2023 09:13:05.6212010	Other	Gotham City 181-Cap 1-4 Relays
09/01/2023 11:01:16.7394930	Other	Blauhaven 10-T1
09/01/2023	Other	Gotham City 181-Cap 5 Relay

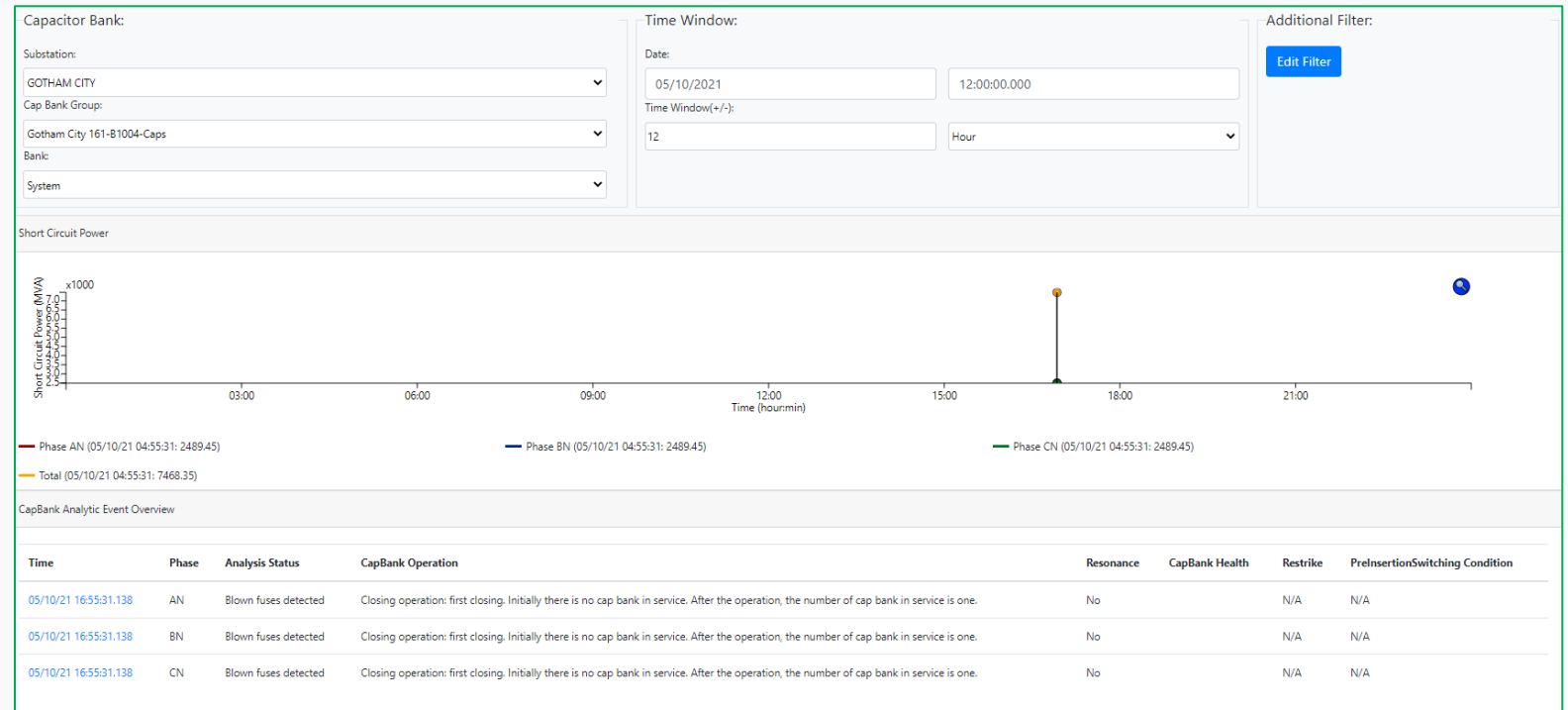
System Event
Browser



PQBrower

Custom Reports

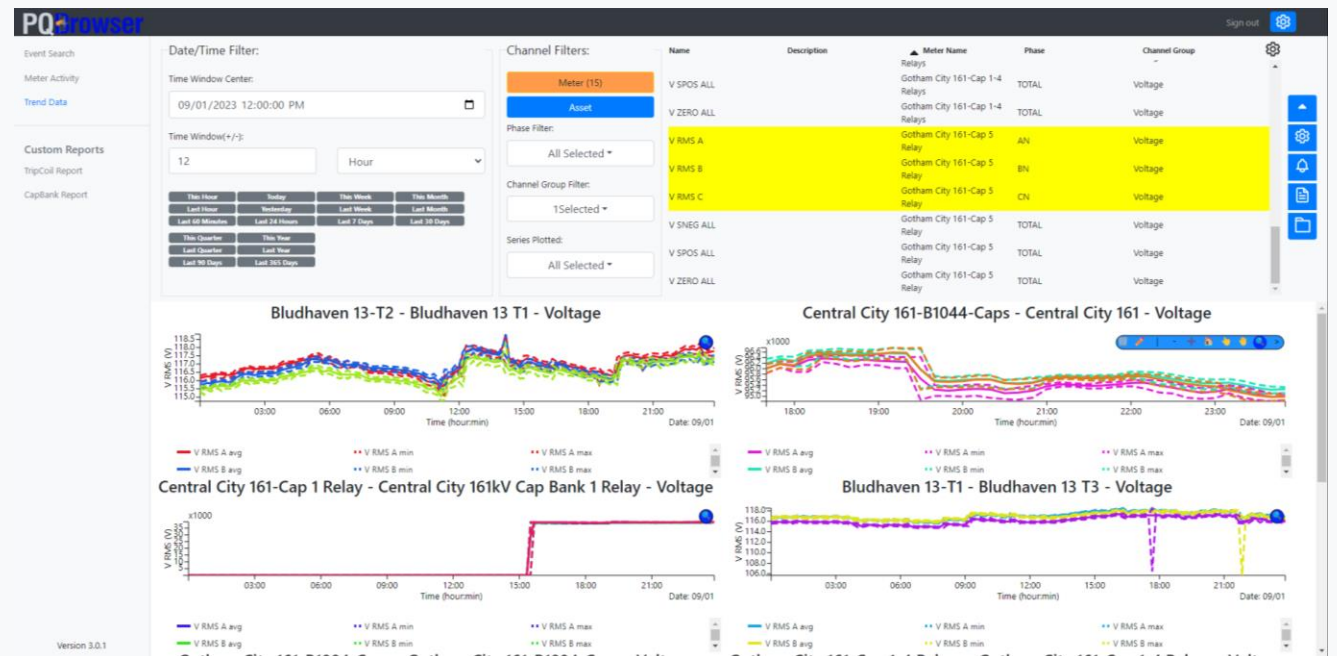
- Asset Health
 - TripCoil
 - CapBank
 - Breaker
- Compliance
 - IEEE 1547
 - IEEE 2800 (*in development*)
- Additional Custom Reports commissionable on request.



Example CapBank Report

Trend Data

- View trend data from multiple channels and meters at once for comparison
- Mark events that occurred on the given meter in the selected time window for context
- Custom Channel Group filters and Plot elements



Event Search

Meter Activity

Trend Data

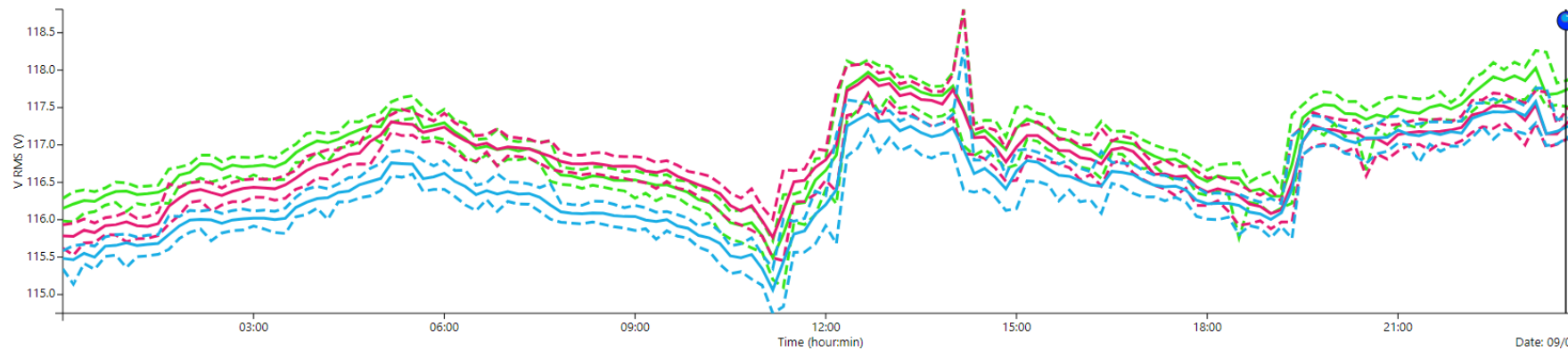
Custom Reports

TripCoil Report

CapBank Report

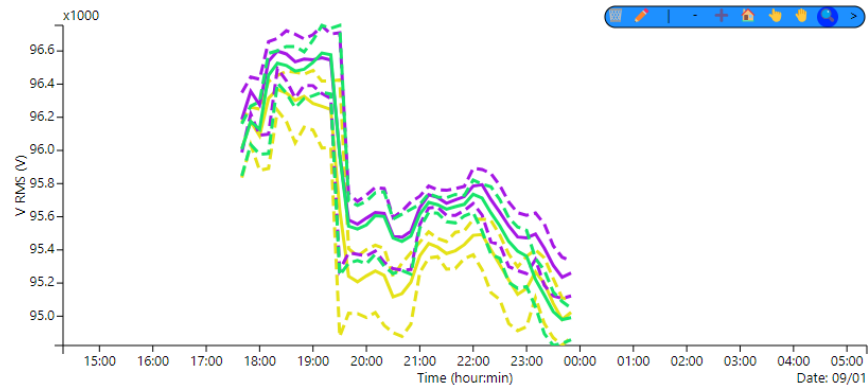
09/01/2023 12:00:00.000 +/- 12 Hours

Bludhaven 13-T2 - Bludhaven 13 T1 - Voltage



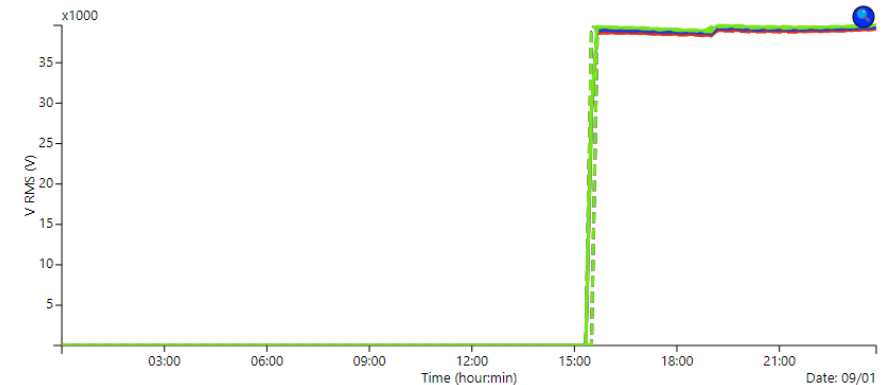
Legend for Bludhaven 13-T2 - Bludhaven 13 T1 - Voltage:
V RMS A avg (solid green), V RMS A min (dotted green), V RMS A max (dashed green)
V RMS B avg (solid pink), V RMS B min (dotted pink), V RMS B max (dashed pink)

Central City 161-B1044-Caps - Central City 161 - Voltage



Legend for Central City 161-B1044-Caps - Central City 161 - Voltage:
V RMS A avg (solid yellow), V RMS A min (dotted yellow), V RMS A max (dashed yellow)
V RMS B avg (solid purple), V RMS B min (dotted purple), V RMS B max (dashed purple)

Central City 161-Cap 1 Relay - Central City 161kV Cap Bank 1 Relay - Voltage



Legend for Central City 161-Cap 1 Relay - Central City 161kV Cap Bank 1 Relay - Voltage:
V RMS A avg (solid red), V RMS A min (dotted red), V RMS A max (dashed red)
V RMS B avg (solid blue), V RMS B min (dotted blue), V RMS B max (dashed blue)

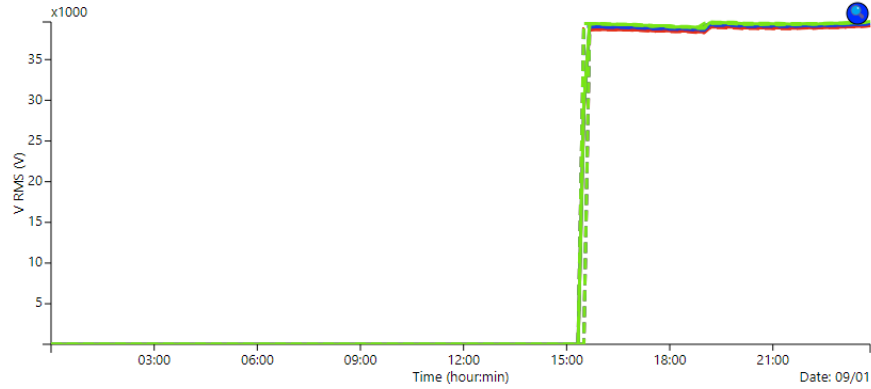
Version 3.0.1

- Event Search
- Meter Activity
- Trend Data

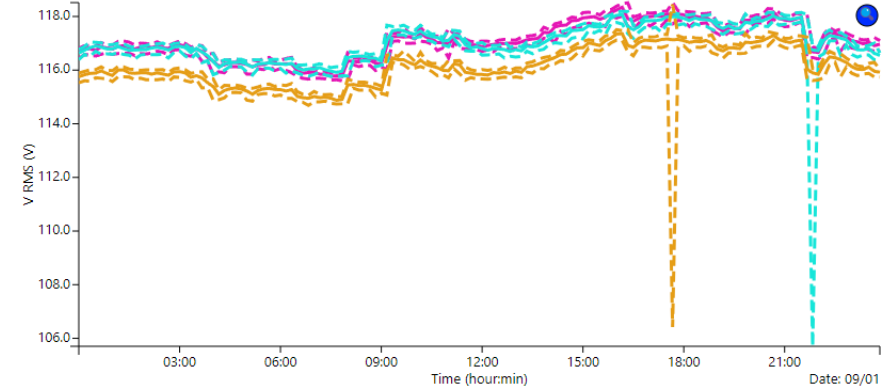
- Custom Reports
- TripCoil Report
- CapBank Report

09/01/2023 12:00:00.000 +/- 12 Hours

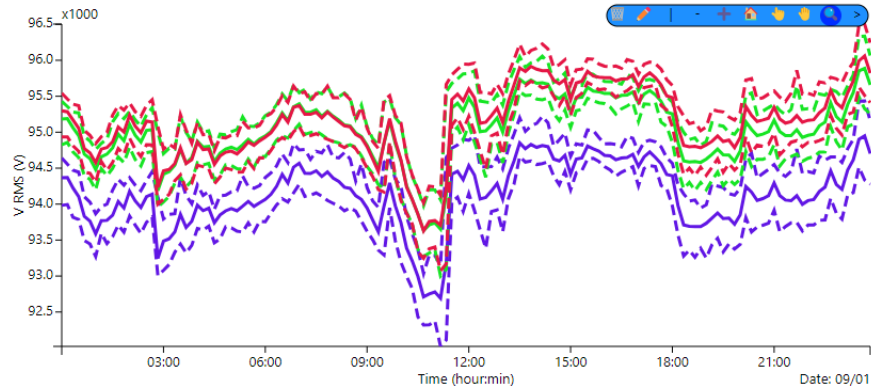
Central City 161-Cap 1 Relay - Central City 161kV Cap Bank 1 Relay - Voltage



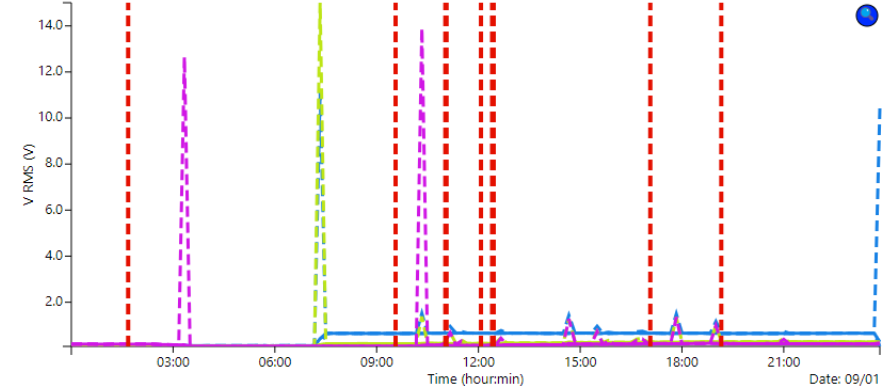
Bludhaven 13-T1 - Bludhaven 13 T3 - Voltage



Gotham City 161-B1004-Caps - Gotham City 161-B1004-Caps - Voltage



Gotham City 161-Cap 1-4 Relays - Gotham City 161-Cap 1-4 Relays - Voltage



Version 3.0.1

Still to Come...

- Real-time Metering Data screens from openMIC
- Additional Event Widgets for more context
- PQ Dashboard updates to more closely align Dashboard & Browser